



قسم التمريض الباطني الجراحي

رؤية القسم:

ان نكون روادا في مجال التمريض الباطني الجراحي بين كليات التمريض علي المستوى الاقليمي وان نظهر تميزا في ممارسة التمريض والتعليم والادارة والبحث.

رسالة القسم:

نلتزم بتعزيز التميز في مجال التمريض الباطني الجراحي من خلال اعداد طلاب التمريض ليكونوا ممرضين اكفاء ومهنيين من خلال استخدام تعليم عالي الجودة والبحث العلمي والممارسة المبنية علي الادلة والتدريب العملي.

اهداف القسم:

- ١- مواكبة احدث التطورات في مجال التمريض الباطني الجراحي
- ٢- تعزيز الاجراءات التمريضية المتقدمة في مجالات التمريض الباطني الجراحي
- ٣- اطلاع الطلاب واعضاء هيئة التدريس علي التغييرات في البروتوكولات والسياسات مجال التمريض الباطني الجراحي
- ٤- تسهيل الانشطة البحثية للطلاب واعضاء هيئة التدريس مجال التمريض الباطني الجراحي
- ٥- تطوير ارشادات الممارسات الاكلينيكية في مجال التمريض الباطني الجراحي
- ٦- ضمان التقييم النقدي لانشطة الطلاب واعضاء هيئة التدريس مجال التمريض الباطني الجراحي
- ٧- تشجيع الانشطة التعاونية مع الاقسام الاخرى في كلية التمريض وجامعة بني سويف

رئيس قسم التمريض الباطني الجراحي

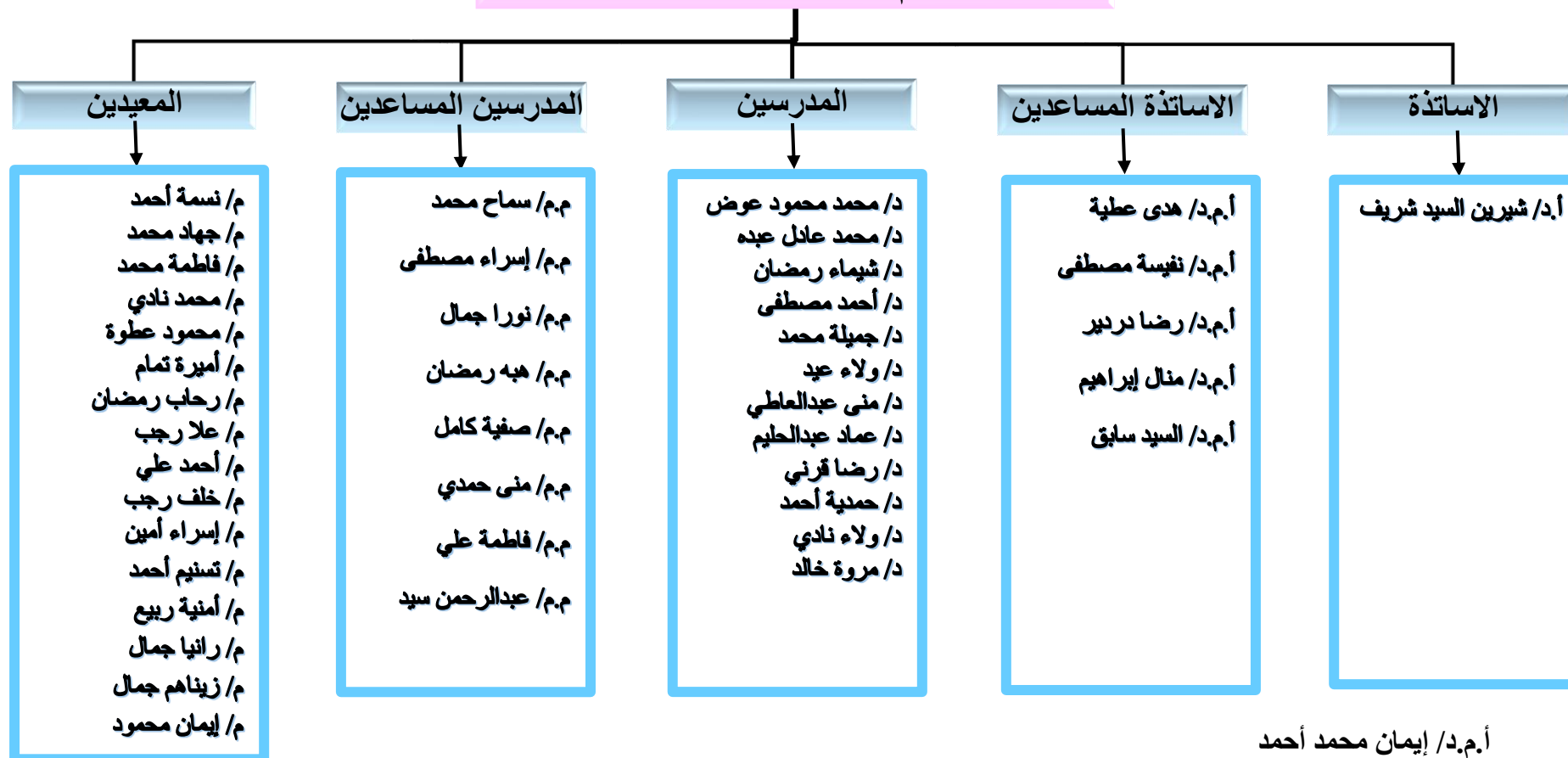
ا.م.د/ ايمان محمد احمد



الهيكل التنظيمي لقسم التمريض الباطني والجراحي (الفرقة الثانية)

للعام الجامعي (٢٠٢٥ - ٢٠٢٦)

رئيس قسم تمريض الباطني الجراحي
أ.م.د/ إيمان محمد أحمد



أ.م.د/ إيمان محمد أحمد
رئيس قسم تمريض الباطني الجراحي



Courses Description of Medical Surgical Nursing

Department- 2nd year (1st and 2nd terms)-2026-2026

Adult Health Nursing I and II (Clinical)

The course introduces the learner to the clinical skills needed to care for the client at time of illness and wellness and clinical experiences provided in a variety of settings, which provide opportunities for the learner to initiate specific nursing skills and interventions for health promotion, risk reduction, disease prevention and illness and disease management understanding the interrelatedness of medical and surgical problems. The course focuses on the application of nursing process and utilization of self-care concepts in providing comprehensive nursing management for specialized medical and surgical patients in both acute and chronic settings.

Adult Health Care Nursing (Theory I and II)

The course provides the necessary knowledge needed to care for the patient at time of illness and wellness. It focuses on implementing the nursing process to provide compassionate care to meet the needs of the patient with common acute and chronic health problems. This course focuses on assessment of patient preferences, values and needs to develop and implement a patient-centered plan of care.

The second part builds on meeting the needs of higher-level acuity patients and evaluating optimal healthcare outcomes. Student incorporate evidence-based care and apply clinical reasoning while developing additional practice and skills in organizing and prioritizing patient care more effectively. The use of information and technology is added to document and communicate effectively with nursing and inter professional teams to improve the quality and safety of patient care. Students are assigned patients over the clinical course.

The basics of Pathology

This course provide student with an introduction to the basic concepts of pathology in terms of phenomena that produce alteration in human physiologic function and the resulting human response Upon completion of the course students will understand pathological changes including how pathological processes are manifested progress in the body and primary and secondary



effects In addition it aims to provide students with knowledge about the characteristics and skills of obtaining different types of specimens for different laboratory test as well as the skills to interpret the results of laboratory tests

General Medicine

This course aims to provide students with basic knowledge about the manifestation and treatment of the most common acute and chronic diseases. In addition to application of knowledge regarding improving health, keeping healthy, early diagnosis of illnesses, care and rehabilitation, for the patient and family.

Applied Nutrition:

This course focuses on nutrition in nursing practice for the restoration and maintenance of health for human beings throughout the life cycle. The basic principles of adequate nutrition, importance, function, sources and requirements of nutrient as well as the types of malnutrition and the dietary therapy will be emphasized. Emphasis is placed on nutritional assessment and interventions for persons with short- or long-term disruptions of health status in relation to current research in therapeutic nutrition.

English Language

The aim of this course is to help learners to understand how to express themselves correctly. They will be practicing the use of grammatical principles and rules.

Also, Learners will be trained on reading, comprehension and they are going to continue strengthening their language skill. Included as well, writing skills and critique. They will be required to participate in class discussion, listen and communicate. They will be required to write scientific papers

Communication skills in nursing

The course is designed to introduce and equip the learner with the necessary knowledge and skills to communicate effectively with patients and their families; it provides the learner with an understanding of the importance of human relations. The course also provides the learner with knowledge and skills required to develop effective therapeutic relationship.



Critical Care Nursing (practical)

This course aims to provide students with skills that are required in providing comprehensive emergency nursing interventions for patients in emergency by using basic principles of emergency care and triage at emergency care units and enable them to perform complete general and specific physical examination of critically ill patients (physical, psychosocial and spiritual).

Critical Care Nursing (theory)

This course aims to provide students with knowledge skills and necessary to provide comprehensive nursing intervention making-decision for patients with critical health conditions in intensive care units. As well It aims to develop the skills to deal with the hardware and technology that are utilized at intensive care units.

General Surgery

This course will focus on the disease process, management and preventive aspects for a variety of conditions covering the systems of the body. A specialty (component will be offered covering the most important and common disorders affecting the adult and old age group

Critical care and Emergency Medicine

This course aims to provide students with the basic knowledge and skills that are required assessing patients with emergent immediately life threatening conditions through primary and secondary survey demonstrating advance skills \competence in managing critically ill patients including Advance Cardiac Life Support and implementing the American Heart Association guidelines of basic and advanced life support measures in emergency situations.

Head of Department

Assist.Prof. Dr/ Eman Mohammed Ahmed



Course Description of Master's program in Medical–

Surgical Nursing

First Semester

- **Curriculum Development in Nursing:**

This course provides a comprehensive exploration of the theories, principles, and procedures necessary for designing, developing, implementing, and evaluating nursing education curricula. Students will examine the philosophical and historical foundations of nursing education and analyze how current evidence, research-based educational theory, and advances in health care practice influence curriculum models. The focus is on linking educational concepts and learning theories to established standards of nursing practice and ensuring the curriculum prepares knowledgeable, competent, and reflective practitioners. Topics typically include needs assessment, setting program outcomes, selecting teaching-learning strategies, accreditation standards, and evaluation methodologies.

- **Nursing research:**

This course aims at providing students with opportunities to acquire knowledge that promote development of nursing research consumer. The course focuses on the integration of theory, practice and research. This course will provide students chances to become familiar with the various methods of scientific inquiry including both qualitative and quantitative data. The component of research process will be presented, explored, and applied.



- **New Trends in Nursing (Issues and Trends in Nursing/Healthcare):**

This course offers a critical analysis of major issues, current challenges, and evolving trends in contemporary professional nursing and the broader healthcare system. Students will explore the socioeconomic, ethical, legal, and political variables that affect nursing practice, policy, and healthcare delivery. Key areas of study often include the impact of technology (e.g., tele-health, informatics), patient safety initiatives (e.g., QSEN), workforce shortages, healthcare financing, evidence-based practice, and cultural diversity in patient care. The course prepares future nurse leaders to analyze these trends, advocate for change, and contribute to improved health outcomes and professional advancement.

- **Community Study and Its Problems:**

This course focuses on developing an in-depth understanding of the community as a client in nursing and public health. It covers the meaning, nature, and functions of a community and introduces methodologies for community assessment, data collection, and analysis. A major component involves identifying, analyzing, and developing strategies to address significant community problems and health disparities. Topics often include environmental health issues, social determinants of health, vulnerable populations, the role of social and political structures, and the principles of social planning and community development aimed at empowering community members to solve their own problems and achieve sustainable change.

- **Ethics and Professional Conduct in Nursing:**

This course is geared towards interpretation of professional code of ethics and laws related to political and social right of human beings. The role of professional organization and characteristics of the professional nurse are considered.



Emphasis is placed on developing the ability of the nurse to recognize and apply relevant legal concepts to insure his/her legal safety while providing optimal patient care based on human need and right in relation to food, health services.

- **Methods of Teaching:**

This course is aiming to provide nursing students with the basic concepts and theories of teaching process. The courses emphasize the learning principles and evaluate different teaching methods. It also focus on develop educational unit using appropriate objectives, method, audiovisual aids, and evaluation to provide effective health teaching to individuals and groups.

- **Basics of Bio-statistics:**

This course aims to provide students with skills necessary for applications of statistical methods in the field of health studies and services by utilizing a statistical software package (SPSS) as a tool to facilitate the processing, editing, storing, displaying, analysis and interpretation of health research related data.



Second Semester

- **Medical Surgical Nursing I (Theory):**

The course provides the necessary knowledge needed to care for the patient at time of illness and wellness. It focuses on implementing the nursing process to provide compassionate care to meet the needs of the patient with common acute and chronic health problems. This course focuses on assessment of patient preferences, values and needs to develop and implement a patient-centered plan of care.

The second part builds on meeting the needs of higher-level acuity patients and evaluating optimal healthcare outcomes. Student incorporates evidence-based care and applies clinical reasoning while developing additional practice and skills in organizing and prioritizing patient care more effectively. The use of information and technology is added to document and communicate effectively with nursing and inter professional teams to improve the quality and safety of patient care. Students are assigned patients over the clinical course.

- **Medical Surgical Nursing I (Clinical):**

The course introduces the learner to the clinical skills needed to care for the client at time of illness and wellness and clinical experiences provided in a variety of settings, which provide opportunities for the learner to initiate specific nursing skills and interventions for health promotion, risk reduction, disease prevention and illness and disease management understanding the interrelatedness of medical and surgical problems. The course focuses on the application of nursing process and utilization of self-care concepts in providing comprehensive nursing management for specialized medical and surgical patients in both acute and chronic settings



- **General Medicine:**

This course aims to provide students with basic knowledge about the manifestation and treatment of the most common acute and chronic diseases. In addition to application of knowledge regarding improving health, keeping healthy, early diagnosis of illnesses, care and rehabilitation, for the patient and family.

- **Applied Nutrition:**

This course focuses on nutrition in nursing practice for the restoration and maintenance of health for human beings throughout the life cycle. The basic principles of adequate nutrition, importance, function, sources and requirements of nutrient as well as the types of malnutrition and the dietary therapy will be emphasized. Emphasis is placed on nutritional assessment and interventions for persons with short- or long-term disruptions of health status in relation to current research in therapeutic nutrition.

- **Pharmacology:**

This course aims to provide students with basic knowledge of different types and categories of pharmaceutical products and its various different forms as well as of medication administration. This course focuses on the effects of pharmaceutical drugs on the various organs of the body and uses each of them in the treatment of various diseases and the drug interactions in addition to the factors that impact on the effectiveness of medicines. The course provides knowledge in relation to legal aspects in the definition of drug delivery and the role of the nurse in dealing with pharmaceuticals.



- **Anatomy:**

Study of tissues, organs, and organ systems and review of selected organ systems such as the integumentary, nervous, endocrine, hematologic, and musculoskeletal systems. Review of systems will incorporate the anatomy and system and its relevance, and importance to patient care. The second of the two courses emphasis is on interrelationships among the cardiovascular, immune, respiratory, digestive, urinary, and reproductive systems.



Third Semester

- **Advanced Medical Surgical Nursing II (Theory):**

The course provides the necessary knowledge needed to care for the patient at time of illness and wellness. It focuses on implementing the nursing process to provide compassionate care to meet the needs of the patient with common acute and chronic health problems. This course focuses on assessment of patient preferences, values and needs to develop and implement a patient-centred plan of care.

The second part builds on meeting the needs of higher-level acuity patients and evaluating optimal healthcare outcomes. Students incorporate evidence-based care and apply clinical reasoning while developing additional practice and skills in organizing and prioritizing patient care more effectively. The use of information and technology is added to document and communicate effectively with nursing and inter professional teams to improve the quality and safety of patient care. Students are assigned patients over the clinical course.

- **Advanced Medical Surgical Nursing II (Clinical):**

The course introduces the learner to the clinical skills needed to care for the client at time of illness and wellness and clinical experiences provided in a variety of settings, which provide opportunities for the learner to initiate specific nursing skills and interventions for health promotion, risk reduction, disease prevention and illness and disease management understanding the interrelatedness of medical and surgical problems. The course focuses on the application of nursing process and utilization of self-care concepts in providing comprehensive nursing management for specialized medical and surgical patients in both acute and chronic settings



- **New Concepts in Medical Surgical Nursing:**

This course introduces students to modern and emerging concepts in nursing that influence professional practice in the 21st century. It focuses on holistic, patient-centred care, evidence-based practice, technological innovations, quality and safety standards, and global health perspectives. The course aims to prepare nursing students to integrate contemporary theories, ethical standards, and leadership skills into professional practice.

- **General Surgery:**

This course will focus on the disease process, management and preventive aspects for a variety of conditions covering the systems of the body. A specialty (component will be offered covering the most important and common disorders affecting the adult and old age group.

- **Physiology:**

The course introduces the learner to the normal functions of different, organs and systems of the body in details and the fundamental concepts of the human body. The course progresses from the functions of cells and tissues to the physiology of the integrated organ systems of the body. It deals with the basic regulatory mechanisms which promote homeostasis.

- **Pathology**

This course provide student with an introduction to the basic concepts of pathology in terms of phenomena that produce alteration in human physiologic function and the resulting human response Upon completion of the course students will understand pathological changes including how pathological processes are manifested progress in the body and primary and secondary effects.



In addition it aims to provide students with knowledge about the characteristics and skills of obtaining different types of specimens for different laboratory test as well as the skills to interpret the results of laboratory tests.



Elective courses for the second and third semesters

- **Alternative medicine applications in internal and surgical nursing:**

This course will focus on demonstrate understanding of kinds of different types of alternative medicine applications in internal and surgical nursing. -Demonstrate understanding characteristics of different kinds of alternative healthcare modalities.

- **Advanced Pathology:**

This course provides the postgraduate with knowledge related to general and advanced pathology to be applied in the clinical setting during caring of adults with potential or actual health problems.

- **Teaching strategies in nursing education:**

This course aims to analyses teaching and learning strategies in nursing assess the teaching learning information resources and examine evaluation process.

- **Nutrition:**

This course aims to equip the candidate with the basic and advanced perspective in the nutrition related to Medical Surgical patients. The course is designed to present an orientation to the knowledge necessary to enable them to assist patient with Nutritional health problems, understand basic diet therapy as well to comply with their nutritional regimen within their socio- cultural environment.

- **Applied of Nursing theory in medical _surgical**

Provide the candidate with description of different nursing theories and its applications in nursing practice in the field of medical surgical nursing.

Head of Department

Assist.Prof. Dr/ Eman Mohammed Ahmed



**الايمل الخاص بأعضاء هيئة التدريس والهيئة المعاونة لقسم
تمريض الباطني الجراحي-الفرقة الثانية**

الاسم	Email
شرين السيد المتولي ابراهيم	dr.sherenshrief٧٥@gmail.com
ايمان محمد احمد	emy_mohammed٥٥@yahoo.com
رضا دردير حسين عوض	dr.reda٢٠١٥.rr@gmail.co
هدي عطية عبد النبي رسلان	hoda.attia@nursing.bsu.edu.eg.
منال ابراهيم عبدالفتاح	manalyassen٢٠@gmail.com
شيماء رمضان احمد عبد التواب	nursing٢٠١٤٢٣@yahoo.com
أحمد مصطفى شحاته	ahmed٠١١٩٣@nursing.bsu.edu.eg
جميله محمد سيد	Gamilamohamed٢٢٢@gmail.com
ولاء عيد زكي احمد	walaaeid@nursing.bsu.edu.eg
موني عبدالعاطي عطيه محمد	mona.abdelaty١٩٩١@gmail.com
عماد عبدالحليم أحمد	emadabdelhaleemahmed@nursing.bsu.edu.eg
رضا قرنى احمد محمد	Redakorani٢٣٩@gmail.com
حمدية احمد علي	hamzakotb٤٨٧@gmail.com
ولاء نادي سيد	walaandy١٧@gmail.com
مروة خالد سعيد محمد	marwakhalid٠٤٣@gmail.com
إسراء مصطفى محمد قنديل	Esraamostafa١٦٠٦@gmail.com

n\ nora\22@gmail.com	نورا جمال محمد
ramdanheba\6@gmail.com	.هبة رمضان مياز محمد
dr.sabreenmahmoud\89@gmail.com	صبرين محمود عيد جميل
safiakamel\369@gmail.com	صفية كامل عبد الرازق محمد
Samah.Mohamed@nursing.bsu.edu.eg	سماح محمد أحمد محمد
monahamdy \879@gmail.com	منى حمدي محمد عبد العليم
abdelrahmansay\96@gmail.com	عبدالرحمن سيد عويس علي
drfatmaali\200@gmail.com	فاطمة علي احمد
mohamed.nady@nursing.bsu.edu.eg	محمد نادي صادق سليم
mahmoudatwa\307@gmail.com	محمود حسن محمد عطوه
nesma\6339@gmail.com	نسمه احمد جابر محمد
gehadm\1228@gmail.com	جهاد محمد أبو زيد
fm\8996580@gmail.com	فاطمة محمد عيد عبد السلام
raola\6429@gmail.com	علا رجب احمد
amiratamam\16@gmail.com	اميره تمام عبدالوهاب احمد
e\3485008@gmail.com	رحاب رمضان محمد عبدالدايم
midofox\2468@gmail.com	احمد علي حسن
rkhlf\8265@gmail.com	خلف رجب حسن حسين
alihusseini\55oy@gmail.com	اسراء امين محمد علي
tassnimahmed\59@gmail.com	تسنيم احمد محمد
aa\01119917871@gmail.com	امنيه ربيع خميس عبد اللطيف

رئيس قسم تمريض الباطني الجراحي

ا.م.د/ايمان محمد احمد



Plan of Adult I theory, Medical Surgical **Department**

1st semester , second level (2025-2026)

Week	Date	Topic	Time	Lecturers
1 st	24-9	Nursing Process	3hrs	Dr/ Walaa Eid
2 nd	1-10	Assessment of renal system + urinary tract infection	3hrs	Dr/ Shimaa Ramdan
3 th	8-10	Burn	3 hrs	Dr/ Sheren Sherif
4 th	15-10	Congestive heart failure	3hrs	Dr/ Reda Dardier
5 th	22-10	Hypertension + Valvular heart disease	3hrs	Dr/ Hoda Attia
6 th	29-10	Hernia + appendicitis	3hrs	Dr/ Emad Abdelhalim
7 th	5-11	Peptic Ulcer + Cholecystitis	3hrs	Dr/ Gamila Mohamed
8 th	12-11	Pancreatitis + GIT bleeding	3hrs	Dr/ Mona Abdelattia
9 th	19-11	Hepatitis + Liver Cirrhosis	3hrs	Dr/ Ahmed Mostafa
10 th	26-11	Perioperative concept	3hrs	Dr/ Hamdya Ahmed
11 th	3-12	Diabetes Mellitus	3hrs	Dr/ Eman Mohamed
12 th	10-12	Chronic Renal Failure	3hrs	Dr/ Dr/ Manal Ibrahim
13 th	17-12	Bronchial asthma +COPD+ Pneumonia	3hrs	Dr/ Walaa Nady
14 th	24-12	Renal replacement therapies+ Kidney transplantation	3hrs	Dr/ Marwa khalid

❖ علما بأنه سيتم انعقاد المحاضرة يوم الاربعاء من كل اسبوع من الساعة 9-12 صباحا بمدرج محمد معبد بالدور الارضي.

Course coordinator

Dr/ Marwa khalid

Head of Department

Assist.Prof / Eman Mohammed



Medical Surgical Nursing Department “2nd year”

Academic year (٢٠٢٥-٢٠٢٦) 1st semester

Plan of clinical activity 1st Semester		
N. of weeks	Date	Clinical activity
(١)	٢١-٢٢/٩/٢٠٢٥	Oxygen therapy Blood sampling, culture and IV injection
(٢)	٢٨-٢٩/٩/٢٠٢٥	Cannula insertion and IV infusion Redemonstration
(٣)	٥-٦/١٠/٢٠٢٥	Urinary Catheterization, Sheet & Nursing care plan, Pain assessment and GCS
(٤)	١٢-١٣/١٠/٢٠٢٥	Hospital (medical and surgical area) and Lab area
(٥)	١٩-٢٠/١٠/٢٠٢٥	Hospital (medical and surgical area) and Lab area
(٦)	٢٦-٢٧/١٠/٢٠٢٥	Hospital (medical and surgical area) and Lab area
(٧)	٢-٣/١١/٢٠٢٥	Hospital (medical and surgical area) and Lab area
(٨)	٩-١٠/١١/٢٠٢٥	Quiz ١ -Written Exam ١-Procedures ٢-Medication : Cefotax, flagyl and Alphintern ٣- labs (CBC, Renal function, electrolytes and blood glucose level) - Clinical Exam (Iv injection, Iv sample, Iv



Medical Surgical Nursing Department “2nd year”

Academic year (٢٠٢٥-٢٠٢٦) 1st semester

Date	Group	Time	Clinical Activity	Students	المكان
1 st Week	الأحد ٢١-٩	Group B	٩-١٢AM	Group(B) نصف الجروب	- معمل حالات حرجة - قاعة الدور الثالث
			١٢-٣PM	Group(B) النصف الاخر	بجوار الجودة
		Group A	٩-١٢ AM	Group(A) نصف الجروب	معمل الباطني الجراحي ومعمل Hull
			١٢-٣PM	Group(A) النصف الاخر	و قاعتين خلف الكلية
	الاثنين ٢٢-٩	Group A	٩-١٢ AM	Group(A) نصف الجروب	- معمل حالات حرجة - قاعة الدور الثالث
			١٢-٣PM	Group(A) النصف الاخر	بجوار الجودة
		Group B	٩-١٢ AM	Group(B) نصف الجروب	معمل الباطني الجراحي ومعمل Hull
			١٢-٣PM	Group (B) النصف الاخر	و قاعتين خلف الكلية
2 nd Week	الأحد ٢٨-٩	Group A	٨.٣٠- ٣PM	Group(A)	معمل الباطني الجراحي ومعمل



Medical Surgical Nursing Department “2nd year”

Academic year (٢٠٢٥-٢٠٢٦) 1st semester

						Hull و قاعتين خلف الكلية - معمل حالات حرجة - قاعة الدور الثالث بجوار الجودة
3 rd Week	الأثنين ٢٩-٩	Group B	٨.٣٠ - ٣PM	IV canulation and IV infusion	Group(B)	-معمل حالات حرجة - قاعة الدور الثالث بجوار الجودة معمل الباطني الجراحي ومعمل Hull و قاعتين خلف الكلية
	الأحد ٥-١٠	Group A	٨.٣٠ - ٣PM	Urinary catheterization + Sheet & Nursing care plan Pain assessment & GCS Urinary catheterization	Group(A)	معمل الباطني الجراحي ومعمل Hull معمل حالات حرجة - قاعة الدور الثالث بجوار الجودة



Medical Surgical Nursing Department “2nd year”

Academic year (٢٠٢٥-٢٠٢٦) 1st semester

	الأثنين ٦-١٠	Group B	٩-١٢ PM	Urinary catheterization + Sheet & Nursing care plan Pain assessment & GCS Urinary catheterization	Group(B)	معمل الباطني الجراحي ومعمل Hull -معمل حالات حرجة - قاعة الدور الثالث بجوار الجودة
Hospital Area (Group A)& Lab Area (Group B) Group A ١-A^٨ Medical Area Group A ٩-A^{١٦} Surgical Area						
٤ th Week	الأحد ١٢-١٠	Group A	٩-٣ PM	Hospital (Medical and surgical area)	Group (A) A ١-A ٤ Medical	اماكن التدريب بالمستشفى
		Group B	٩-٣ PM	Lab area (Blood Sample, culture and cannula)	Group (A) A ٩-A ١٢ Surgical	
	الاثنين ١٣-١٠	Group A	٩-٣ PM	Hospital (Medical and surgical area)	Group(B) B ١-B ٨ + لائحة قديمة	-معمل باطنة وجراحة -معمل الحالات الحرجة -معمل Hull -قاعة الدور الثالث
		Group	٩-٣ PM	Lab area	Group (A) A ٥-A ٨ Medical Group (A) A ١٣-A ١٦ Surgical	اماكن التدريب بالمستشفى
		Group	٩-٣ PM	Lab area	Group (B)	-معمل باطنة



Medical Surgical Nursing Department “2nd year”

Academic year (٢٠٢٥-٢٠٢٦) 1st semester

		B		(Blood Sample, culture and cannula)	B ^٩ -B ^{١٦} + باقي للاعادة	وجراحة معمل الحالات الحرجة معمل Hull قاعة الدور الثالث
5 th Week	الأحد ١٩-١٠	Group A	٩-٣ PM	Hospital (Medical and surgical area)	Group A A ^١ -A ^٤ Medical Group (A) A ^٩ -A ^{١٢} Surgical	اماكن التدريب بالمستشفى
		Group B	٩-٣ PM	Lab Area (IV injection and catheter)	Group B B ^١ -B ^٨ + لائحة قديمة	معمل باطنة وجراحة ومعمل الحالات الحرجة معمل Hull قاعة الدور الثالث
	الاثنين ٢٠-١٠	Group A	٩-٣ PM	Hospital (Medical and surgical area)	Group (A) A ^٥ -A ^٨ Medical Group (A) A ^{١٣} -A ^{١٦} Surgical	اماكن التدريب بالمستشفى
		Group B	٩-٣ PM	Lab Area (IV injection and catheter)	Group (B) B ^٩ -B ^{١٦} + باقي للاعادة	معمل باطنة وجراحة ومعمل الحالات الحرجة معمل Hull قاعة الدور الثالث
Hospital Area (Group B)& Lab Area (Group A) Group B^١-B^٨ Medical Area Group B^٩-B^{١٦} Surgical Area						
6 th Week	الأحد ٢٦-١٠	Group B +	٩-٣ PM	Hospital (Medical and surgical area)	Group (B) B ^١ -B ^٤ Medical	اماكن التدريب بالمستشفى



Medical Surgical Nursing Department “2nd year”

Academic year (٢٠٢٥-٢٠٢٦) 1st semester

		لائحة قديمة			+ لائحة قديمة	
					Group (B) B ^٩ -B ^{١٢} Surgical	
	الاثنين ٢٧-١٠	Group A	٩-٣ PM	Lab area (Blood Sample, culture and cannula)	Group(A) A ^١ -A ^٨	معمل باطنة وجراحة معمل الحالات الحرجة معمل Hull قاعة الدور الثالث
		Group B + باقي للاعادة	٩-٣ PM	Hospital (Medical and surgical area)	Group B B ^٥ -B ^٨ Medical + باقي لاعادة	اماكن التدريب بالمستشفى
					Group (B) B ^{١٣} -B ^{١٦} Surgical	
		Group A	٩-٣ PM	Lab area (Blood Sample, culture and cannula)	Group (A) A ^٩ -A ^{١٦}	معمل باطنة وجراحة معمل الحالات الحرجة معمل Hull قاعة الدور الثالث
	٧ th Week	الأحد ٢/١١	Group B + لائحة قديمة	٩-٣ PM Hospital (Medical and surgical Area)	Group B B ^١ -B ^٤ Medical + لائحة قديمة	اماكن التدريب بالمستشفى



Medical Surgical Nursing Department “2nd year”

Academic year (٢٠٢٥-٢٠٢٦) 1st semester

					Group B B٩-B١٢ Surgical	
		Group A	٩-٣ PM	Lab Area (IV injection and catheter)	Group(A) A١-A٨	معمل باطنة وجراحتهو معمل الحالات الحرجة معمل Hull قاعة الدور الثالث
	الاثنين ٣/١١	Group B + باقي لإعادة	٩-٣ PM	Hospital (Medical and surgical Area)	Group B B٥-B٨ Medical + باقي لإعادة	اماكن التدريب بالمستشفى
					Group B B١٣-B١٦ Surgical	
		Group A	٩-٣ PM	Lab Area (IV injection and catheter)	Group (A) A٩-A١٦	معمل باطنة وجراحتهو معمل الحالات الحرجة معمل Hull قاعة الدور الثالث
٨ th Week	الاحد والاثنين	A,B	٩, ١٠/١١	Quiz ١ الاحد جروب A+ لائحة قديمة الاثنين جروب B+ باقي للاعاده		



Medical Surgical Nursing Department “2nd year”

Academic year (٢٠٢٥-٢٠٢٦) 1st semester

Hospital area (Group A) and Assignment For Group B Group A ١-A ٨ Surgical Area Group A ٩-A ١٦ Medical Area

9 th Week	الأحد ١٦-١١	Group A	٩-٣PM	Hospital (Medical and Surgical area)	Group (A) A ١-A ٤ Surgical Group (A) A ٩-A ١٢ Medical	اماكن التدريب بالمستشفى
		أبحاث جروب B	٩-١٢PM	Stoma and paracentesis + لائحة قديمة	Group (B) B ١-B ٨ تحضير لائحة قديمة B ١, B ٣, + B ٥, B ٧	معمل باطنة وجراحة معمل الحالات الحرجة معمل Hull قاعة الدور الثالث
			١٢-٣PM	Stoma and paracentesis + باقون للاعاده	Group (B) B ٩-B ١٦ تحضير B ٩, B ١١, B ١٣, B ١٥ + باقون للاعاده	
	الاثنين ١٧-١١	Group A	٩-٣PM	Hospital (Medical and Surgical area)	Group (A) A ٥-A ٨ Surgical Group (A) A ١٣-A ١٦ Medical	اماكن التدريب بالمستشفى
		أبحاث جروب B	٩-١٢PM	Nephrostomy tube and suprapubic catheter +	Group (B) B ١-B ٨ تحضير B ٢, B ٤,	معمل باطنة وجراحة معمل الحالات الحرجة معمل Hull قاعة الدور الثالث



Medical Surgical Nursing Department “2nd year”

Academic year (٢٠٢٥-٢٠٢٦) 1st semester

				لائحة قديمة	B٦,B٨	
			١٢-٣PM	Nephrostomy tube and suprapubic catheter + باقي للاعادة	Group (B) B٩-B١٦ تحضير B١٠, B١٢, B١٤, B١٦	معمل باطنة وجراحة -معمل الحالات الحرجة -معمل Hull -قاعة الدور الثالث
١٠ th Week	الأحد ٢٣-١١	Group A	٩-٣PM	Hospital (Medical and Surgical area)	Group (A) A١-A٤ Surgical	اماكن التدريب بالمستشفى
		أبحاث جروب B	٩-١٢PM	Blood Transfusion + لائحة قديمة	Group (B) B١-B٨ تحضير لائحة قديمة + B١, B٣, B٥, B٧	معمل باطنة وجراحة -معمل الحالات الحرجة -معمل Hull -قاعة الدور الثالث
			١٢-٣PM	Blood Transfusion + باقي للاعادة	Group (B) B٩-B١٦ تحضير باقي للاعادة + B٩, B١١, B١٣, B١٥	
	الاثنين ٢٤/١١	Group A	٩-٣PM	Hospital (Medical and Surgical area)	Group (A) A٥-A٨ Surgical	اماكن التدريب بالمستشفى



Medical Surgical Nursing Department “2nd year”

Academic year (٢٠٢٥-٢٠٢٦) 1st semester

					Group (A) A١٣-A١٨ Medical	
		أبحاث جروب B	٩-١٢PM	Lumbar puncture and ICP + لأنحة قديمة	Group (B) B١-B٨ تحضير B٢, B٤, B٦, B٨	معمل باطنة وجراحة -معمل الحالات الحرجة معمل Hull -قاعة الدور الثالث
			١٢-٣PM	Lumbar puncture and ICP + باقي للاعاده	Group (B) B٩-B١٦ تحضير B١٠, B١٢, B١٤, B١٦	معمل باطنة وجراحة -معمل الحالات الحرجة معمل Hull -قاعة الدور الثالث



Medical Surgical Nursing Department “2nd year”

Academic year (٢٠٢٥-٢٠٢٦) 1st semester

Hospital area (Group B) and Assignment For Group A Group B^١-B^٨ Surgical Area Group B^٩-B^{١٦} Medical Area

11 th Week	الأحد ٣٠-١١	Group B	٩-٣PM	Hospital (Medical and Surgical area)	Group (B) B ^١ -B ^٤ Surgical + لائحة قديمة	اماكن التدريب بالمستشفى
		أبحاث جروب A	٩-١٢PM	Stoma and paracentesis	Group (B) B ^٩ -B ^{١٢} Medical	
					Group (A) A ^١ -A ^٨ تحضير A ^١ ,A ^٣ , A ^٥ ,A ^٧	معمل باطنة وجراحة معمل الحالات الحرجة معمل Hull قاعة الدور الثالث
			١٢-٣PM	Stoma and paracentesis	Group (A) A ^٩ -A ^{١٦} تحضير A ^٩ , A ^{١١} , A ^{١٣} ,A ^{١٥}	
	الاثنين ١-١٢	Group B	٩-٣PM	Hospital (Medical and Surgical area)	Group (B) B ^٥ -B ^٨ Surgical + باقي للاعاده	اماكن التدريب بالمستشفى
		أبحاث جروب A	٩-١٢PM	Nephrostomy tube and suprapubic catheter	Group (B) B ^{١٣} -B ^{١٦} Medical	
					Group (A) A ^١ -A ^٨ تحضير A ^٢ , A ^٤ ,	معمل باطنة وجراحة معمل الحالات الحرجة معمل Hull قاعة الدور الثالث



Medical Surgical Nursing Department “2nd year”

Academic year (٢٠٢٥-٢٠٢٦) 1st semester

					A ^٦ ,A ^٨	
			١٢-٣PM	Nephrostomy tube and suprapubic catheter + باقي للاعاده	Group (A) A ^٩ -A ^{١٦} تحضير A ^{١٠} , A ^{١٢} , A ^{١٤} , A ^{١٦}	معمل باطنة وجراحة معمل الحالات الحرجة معمل Hull قاعة الدور الثالث
١٢ th Week	الأحد ٧-١٢	Group B	٩-٣PM	Hospital (Medical and Surgical area)	Group (B) B ^١ -B ^٤ + لائحة قديمة Surgical	اماكن التدريب بالمستشفى
		أبحاث جروب A	٩-١٢PM	Blood Transfusion	Group (A) A ^١ -A ^٨ تحضير A ^١ , A ^٣ , A ^٥ ,A ^٧	معمل باطنة وجراحة معمل الحالات الحرجة معمل Hull قاعة الدور الثالث
			١٢-٣PM	Blood Transfusion	Group (A) A ^٩ -A ^{١٦} تحضير A ^٩ , A ^{١١} , A ^{١٣} ,A ^{١٥}	
	الاثنين ٨-١٢	Group B	٩-٣PM	Hospital (Medical and Surgical area)	Group (B) B ^٥ -B ^٨ + باقي للاعاده Surgical	اماكن التدريب بالمستشفى



Medical Surgical Nursing Department “2nd year”

Academic year (٢٠٢٥-٢٠٢٦) 1st semester

					Group (A) B١٣-B١٨ Medical	
		أبحاث جروب A	٩-١٢PM	Lumbar puncture and ICP	Group (A) A١-A٨ تحضير A٢, A٤, A٦, A٨	معمل باطنية وجراحة معمل الحالات الحرجة معمل Hull قاعة الدور الثالث
			١٢-٣PM	Lumbar puncture and ICP	Group (A) A٩-A١٦ تحضير A١٠,A١٢, A١٤, A١٦	معمل باطنية وجراحة معمل الحالات الحرجة معمل Hull قاعة الدور الثالث
١٣ TH Week	الاثنين والاثنين	Group A, B لائحة قديمة وباقي للاعادة	١٤,١٥/١٢		Quiz ٢	
١٤ th Week	السبت والاثنين والاثنين	Group A, B لائحة قديمة وباقي للاعادة	٢٠,٢١,٢٢/١٢		Quiz final	



Medical Surgical Nursing Department “2nd year”

Academic year (٢٠٢٥-٢٠٢٦) 1st semester

13 TH Week	الاحد والاثنين	Group A and B	١٤,١٥/١٢	Quiz ٢
14 th Week	السبت والاحد والاثنين	Group A and B	٢٠,٢١, ٢٢/١٢	Quiz final

رئيس القسم

ا.م.د/ ايمان محمد

منسق العملي

د/ مني عبدالعاطي



Medical Surgical Nursing Department
Academic year (٢٠٢٥-٢٠٢٦) ١st semester



Adult nursing I theory Student evaluation

Clinical activity	Grade	Score
QUIZ (١)	٤٠	
QUIZ (٢)	٣٠	
Attitude	١٠	
Final exam	١٢٠	
Total	٢٠٠	

Course coordinator

Dr/ Marwa khalid

Head of Department

Assist.Prof / Eman Mohammed



Medical Surgical Nursing Department “2nd year”

Academic year (2025-2026) 1st semester

Evaluation of Adult Nursing practical 1st Semester / 2nd year 2025- 2026

Student's Name:.....

Group:.....

توزيعه اللانحة الجديدة

Items of Evaluation	Grade	Student's grade	Comment
Lab area	20		
Hospital Area	40		
Assignment	20		
Quiz 1 clinical	10		
Written Exam 1	10		
Quiz 2 clinical	10		
Written exam 2	10		
Final clinical Exam Written 20 Clinical 60 الدرجة الشيك ليست هتتقسم علي ٢ يبقي كده من ٢٠ وتتضرب في ٣	80		
Total	200		



Hospital Area (40)

الطالب هـحضـر ٤ مرـات مسـتـشـفـي كل مرـة ١٠ درجـات كـالـاتـي

Absentism 1.5

Attitude 1.5

Kits 1

Uniform 1

Sheet 5

Lab area (20)

الطالب هـحضـر اريـه لاب مرتين كل مره ١٠ درجـات كـالـاتـي

Absentism 1.5

Attitude 1.5

Kits 1

Uniform 1

Application 5

Assignment (20)

الطالب هـحضـر ابحـاث ٤ مرـات كل مره ٥ درجـات كـالـاتـي

Absentism 1

Attitude .5

Uniform .5

Assignment prep 1.5

Assignment Pres 1.5

اللائحة القديمة



نفس درجات اللانحة الجديدة في الكويزات ١ و ٢

Items of Evaluation	Grade	Student's grade	Comment
Lab area نفس درجات اللانحة الجديده بس درجة التوتال تتقسم علي ٢	10		
Hospital Area نفس درجات اللانحة الجديده بس درجة التوتال تتقسم علي ٢	20		
Assignment نفس درجات اللانحة الجديده بس درجة التوتال تتقسم علي ٢	10		
Quiz 1 clinical	10		
Written Exam 1	10		
Quiz 2 clinical	10		
Written exam 2	10		
Final clinical Exam Written 10 نفس امتحان الانحة القديم بس هيتقسم علي ٢ Clinical 10 امتحان الشيك ليست بس هيتقسم علي ٤	20		
Total	100		

Student's signature:

Instructor signature:



خطة تطوير مستقبلية لقسم التمريض الباطني الجراحي - كلية التمريض جامعة بني سويف للعام الجامعي (٢٠٢٥ - ٢٠٢٦)

١. مراجعة وتحديث المقررات الدراسية الحالية الخاصة بالقسم لتتوافق مع المعايير القومية والعالمية (معايير الهيئة القومية لضمان جودة التعليم والاعتماد) متضمنة التدريس والوسائل التعليمية ونظام التقييم .
- ٢- تنمية المهارات التعليمية لاجتماع هيئة التدريس بالقسم من خلال المشاركة في الندوات والمؤتمرات الاقليمية والعالمية.
- ٣- تشجيع ودعم أعضاء هيئة التدريس للحصول على درجات علمية أعلى ودورات تدريبية متقدمة في تخصصاتهم.
- ٤- تحسين جودة التعليم من خلال دعم الطلاب في نظم التدريس من خلال استخدام اساليب تعليم متميزه تتمثل في توفير برامج محاكاة افتراضية لتدريب الطلاب على اتخاذ القرارات في سيناريوهات معقدة وأيضا من خلال توفير معامل مجهزة باحدث الادوات والتجهيزات وتحديث معامل المحاكاة الحالية بأجهزة ومعدات محاكاة متطورة وذلك لتوفير بيئة محاكاة تحاكي بيئة المستشفى مما يوفر للطلاب فرصة تعليمية فريدة من نوعها وذلك لتأهيل الطلاب على العمل مع الفريق الصحي لتقديم رعاية صحية متكاملة للمرضى .
- ٥ - العمل علي تدعيم نظام الجودة بالقسم.
- ٦- الالتزام بالخطة البحثية في المجالات المحددة من قبل القطاع الصحي والعمل بها في الابحاث العلمية لاجتماع هيئة التدريس وايضا رسايل الماجستير والدكتوراه لطلاب الدراسات العليا.
- ٧- تشجيع أعضاء هيئة التدريس ومعاونيهم على نشر الأبحاث في مجلات علمية محكمة مرموقة محلياً وعالمياً.



٨- الاستفادة من الابحاث المنشورة دوليا من اعضاء هيئة التدريس للمساهمة بالارتقاء بالعملية التعليمية داخل القسم.

٩- تنظيم مؤتمر علمي سنوي أو نصف سنوي ينظمه القسم حول مستجدات تمريض الباطني الجراحي.

١٠- تشجيع أنشطة التعاون مع الاقسام الاخرى في كلية التمريض جامعة بني سويف.

١١- المشاركة في الأنشطة المجتمعية التي تساهم في حل مشاكل المجتمع وتنمية البيئة من خلال المشاركة في القوافل الطبية والايام الصحية العالمية وحملات التبرع بالدم... وغيرها.

رئيس قسم التمريض الباطني الجراحي

ا.م.د/ ايمان محمد احمد



الابحاث الخاصة باعضاء هيئة التدريس لقسم التمريض الباطني الجراحي (الفرقة الثانية)

الاسم : ايمان محمد احمد

الوظيفة الحالية: استاذ مساعد

البريد الالكتروني: emy_mohammed@yahoo.com

الابحاث العلمية

-Effect of Shakers Swallowing Exercises on Swallowing Ability among Dysphagic Patients with Cerebrovascular Accident. EJHC Vol.11 No.1, March, 2020; PP: (1169-1153).

-Effect of Progressive Muscle Relaxation on Pain and Fatigue among Post Cardiac Surgery Patients. EJHC Vol.11 No.2, June, 2020; PP: (745-736).

-Academic Nursing Students Awareness about Preventive Measures regarding COVID-19. EJHC Vol.12 No.2, June, 2021; PP: (583-573)

-A Comparative Study Between Distance and Traditional Learning Among University Nursing Students During COVID-19 Pandemic. EJHC Vol.12 No.3, September, 2021; PP: (830-813).

-Effect of Nursing Care Bundle on Patients Undergoing Prostatic Surgery Outcomes. EJHC Vol.12 No.3, September, 2021; PP: (1169-1157)

-Effectiveness of Mind Mapping Strategy on Nurses' Knowledge and Practice regarding Infection Control Measures in Operating Room. EJHC Vol.13 No.1, March, 2022; PP: (1994-1981).



-Effect of Heat Application, Physical Exercise, and Combined Intervention on Pain, Morning Stiffness, and Activity Level among Patients with Knee Osteoarthritis. EJHC, Vol. ١٣ No. ٣, September, ٢٠٢٢; PP: (١٥١١-١٥٢٤).

-Relationship between Symptom Burden Clusters and Quality of Life in Patients with Coronary Artery Bypass Grafting Surgeries. EJHC Vol. ١٣ No. ٤, December, ٢٠٢٢; PP: (١٥٧٤ -١٥٨٧)

الاسم : احمد مصطفى شحاتة

الوظيفة الحالية: مدرس

البريد الالكتروني: ahmed01193@nursing.bsu.edu.eg

عنوان البحث
• Effect of Nurse-Led Intervention on Headache Pain, Anxiety, and Fatigue Levels among Patients with Brain Tumors.
• Effect of Ankle Pump Exercise on Fatigue Sensation, Comfort, and Lower Limb Hemodynamics among Deep Vein Thrombosis Patients.
• Nurses' Performance Regarding Catheter Associated Urinary Tract Infection Bundle in Intensive Care Unit.
• Physical Activity and Nutritional Assessment among Nursing Students at One of the Egyptian Universities.
• Effect of Designed Educational Program on Nurses' Performance regarding Prevention of Aspiration Pneumonia for Patients with Stroke.



الاسم : ولاء نادى سيد

الوظيفة الحالية: مدرس

البريد الالكتروني: walaandy19@gmail.com

عنوان البحث
The effect of simulation based learning of nursing students clinical performance and reality shcok
Effect of designed educational program on nurses performance regarding aspirations pneumonia for patients with stroke
Effect of educational program regarding subglottic suction on nurses performance and patient outcome
Assessment of nurses performance regarding subglottic suction

الاسم : حمدي احمد على

الوظيفة الحالية: مدرس

البريد الالكتروني: hamzakotb48@gmail.com

Factors contributing to hospital acquired anemia among critically ill patient	ماجستير
Effect of educational program about medical devices related pressure injuries on nurses performance and patient clinical out comes	دكتورة

الاسم : منى عبدالعاطى عطية

الوظيفة الحالية: مدرس

البريد الالكتروني: mona.abdelaty1991@gmail.com

Factors affecting acquired muscle weakness among critical ill patients.	ماجستير
Effect of implementing nursing intervention bundle on sleep quality and associate delirium among patients at intensive care unit.	دكتورة



الاسم : مروة خالد سعيد

الوظيفة الحالية: مدرس

البريد الالكتروني:marwakhalid٠٤٣@gmail.com

Health related quality of life for patients after mitral valve replacement	ماجستير
Effect of educational program in patients' knowledge, perception and self care practices after surgical heart valve replacement	دكتوراة

الاسم : منى حمدي محمد

الوظيفة الحالية: مدرس مساعد

البريد الالكتروني:monahamdy٧٨٧٩@gmail.com

Factors affecting nursing care offered for patients with hepatic encephalopathy in critical care unit	ماجستير
---	---------

الاسم : هبة رمضان مياز

الوظيفة الحالية: مدرس مساعد

البريد الالكتروني:ramdanheba٦@gmail.com

Influence of range of motion exercises on hemodynamic parameters for patients on mechanical ventilation	ماجستير
---	---------

الاسم : صفية كامل عبدالرازق

الوظيفة الحالية: مدرس مساعد

البريد الالكتروني:safiakamel٣٦٩@gmail.com

اداء التمريض فيما يتعلق بحزمه الرعايه للوقايه من الالتهاب الرئوي المصاحب للجهاز التنفس الصناعي	ماجستير
--	---------



الاسم : فاطمة احمد على

الوظيفة الحالية: مدرس مساعد

البريد الالكتروني: drfatmaali٢٠٠@gmail.com

Nurses performance regarding peripheral neuropathy and diabetic foot management	ماجستير
---	---------

الاسم : عبدالرحمن سيد عويس

الوظيفة الحالية: مدرس مساعد

البريد الالكتروني: abdelrahmansay٩٦@gmail.com

Factors Affecting Adherence to Oral Anticoagulants Among Patients With Atrial Fibrillation	ماجستير
--	---------